



# 3-pc High Pressure Ball Valves, 6000 PSI

## HP-41

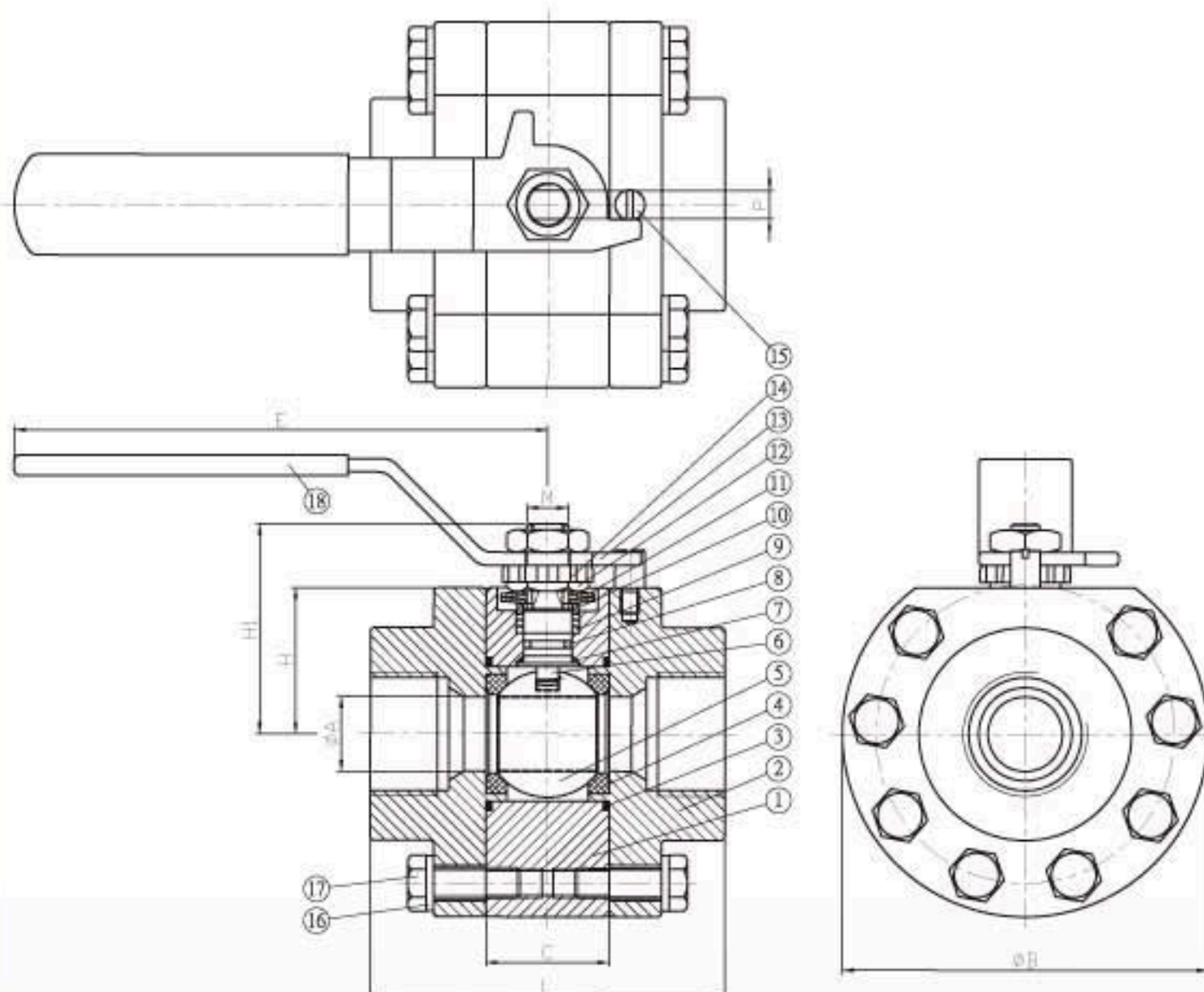


1/4"~2" Threaded / Socket Weld / Butt Weld  
 Blow-out-proof stem  
 Fire safe design pre. BS6755 part 2  
 All seats are preloaded.  
 Self-adjusting stem seals automatically  
 Adjust for stem seal wear  
 Body: Stainless steel, Carbon steel, Special Alloy steel  
 Ball: SS 316  
 Stem: SS316  
 Seats: Delrin / PEEK  
 Working Pressure(CWP): HP-41 6000psi  
 Shell Test: Rating pressure x 1.5 time by water  
 Hyd. Seat Test: Rating pressure x 1.1 time by water  
 Final Seat Test: 100 psig by air  
 End Connections: Threaded/Socketed Weld End/Butt Weld  
 Material Meet. to NACE MR 0175

### Dimensions

Unit : mm

Valve Size	A	B	C	E	H	H1	L	øM	P
1/4"	9.7	76.0	25.0	142.0	29.0	42.0	75.0	M12	9.0
3/8"	11.6	76.0	25.0	142.0	29.0	42.0	75.0	M12	9.0
1/2"	12.5	76.0	25.0	142.0	29.0	42.0	75.0	M12	9.0
3/4"	15.0	84.0	33.0	142.0	35.0	48.3	85.0	M12	9.0
1"	20.0	98.0	33.0	162.0	39.2	54.0	95.0	M12	9.0
1-1/4"	25.0	107.0	41.0	162.0	42.8	57.6	108.0	M12	9.0
1-1/2"	32.0	130.0	50.0	200.0	51.5	73.0	128.0	M18	14.0
2"	38.0	146.0	56.0	200.0	57.5	79.0	156.0	M18	14.0



### Material

No.	Part Name	Material
1	BODY	Stainless St. ASTM A182 F316 Carbon St. ASTM A105
2	END CAP	Stainless St. ASTM A182 F316 Carbon St. ASTM A105
3	BODY SEAL	Delrin
4	SEAT	Delrin
5	BALL	SS316
6	STEM	SS316
7	THRUST WASHER	Delrin
8	O-RING	VITON
9	STEM PACKING	PTFE-25% Carbon Filled
10	GLAND	SS304
11	BELLEVILLE WASHER	SS304
12	STEM NUT	SS304
13	HANDLE	SS304
14	LOCK WASHER	SS304
15	STOP PIN	SS304
16	BOLT WASHER	SS304
17	BOLT	SS304
18	HANDLE COVER	PLASTIC